



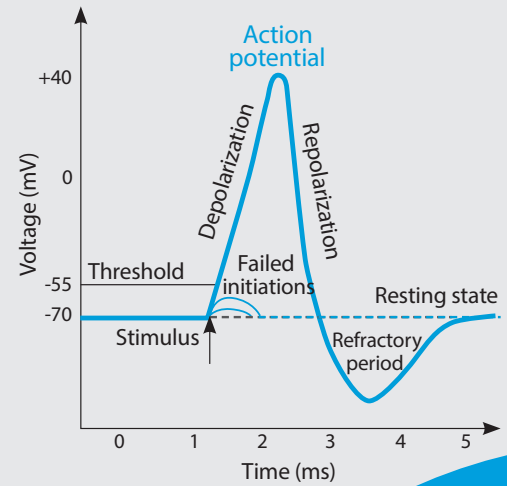
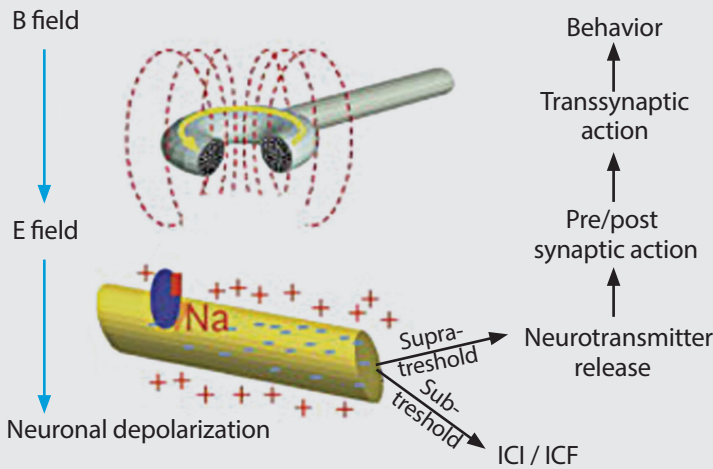
FMS Care™

FUNCTIONAL
MAGNETIC
STIMULATION



PHYSIOTHERAPY
REHABILITATION
SPORTS MEDICINE
PELVIC FLOOR HEALTH

How does the magnetic field **activate** a muscle?



FMS applicator treatments

Treat different musculoskeletal conditions with FMS applicator treatments. Static or dynamic manual treatments can be performed with FMS applicators. Hands-free application can be achieved by attaching the FMS applicator on a customized articulated arm or by fastening them to the body with rubber straps.

The appropriate areas for triggering muscle stimulation can be quickly located. The FMS device delivers pulses of magnetic field obtaining different effects such as activation and strengthening of weakened muscles.

FMS Chair

The FMS chair with two built-in adjustable applicators enables a simultaneous treatment of the pelvic floor and lower back pathologies. The device can be used for various physiotherapy applications and urogynaecology conditions (e.g. incontinence treatment).

NEURO-
PHYSIOTHERAPY

GERIATRIC
DISORDERS

FMS A
OF U

MUSCULOSKELETAL
REHABILITATION

INCONT

Rapid changes of magnetic field intensity induce an electrical current in the neuron. This phenomenon is called electromagnetic induction.

Once the voltage reaches a certain value, a so-called neuron action potential is achieved. This causes the neuron cell to depolarize, which eventually leads to a complete muscle contraction.

FMS effects as visible on the thermal images

Thermal images show us the effect of FMS before and after therapy. Because of muscle activation and strong pulsed magnetic field effect we can see significant health benefits.

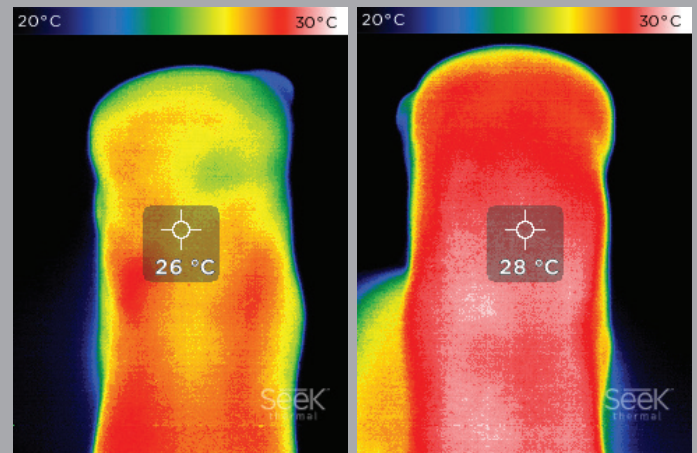
**PELVIC FLOOR
DISORDERS**

**AREAS
USE**

**PAIN
RELIEF**

**ACHILLES
TENDON**

Before &
After

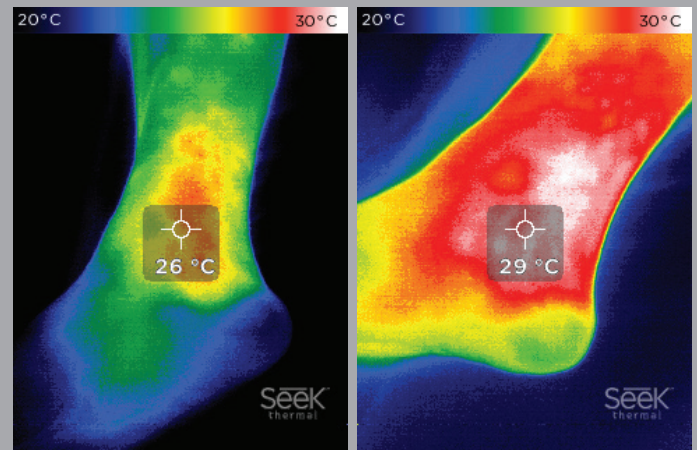


**REHABILITATION
OF SPORTS INJURIES**

INENCE

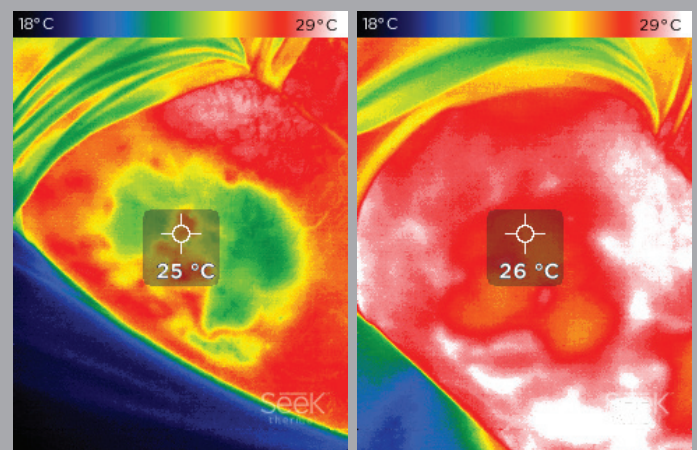
ANKLE

Before &
After



THIGH

Before &
After



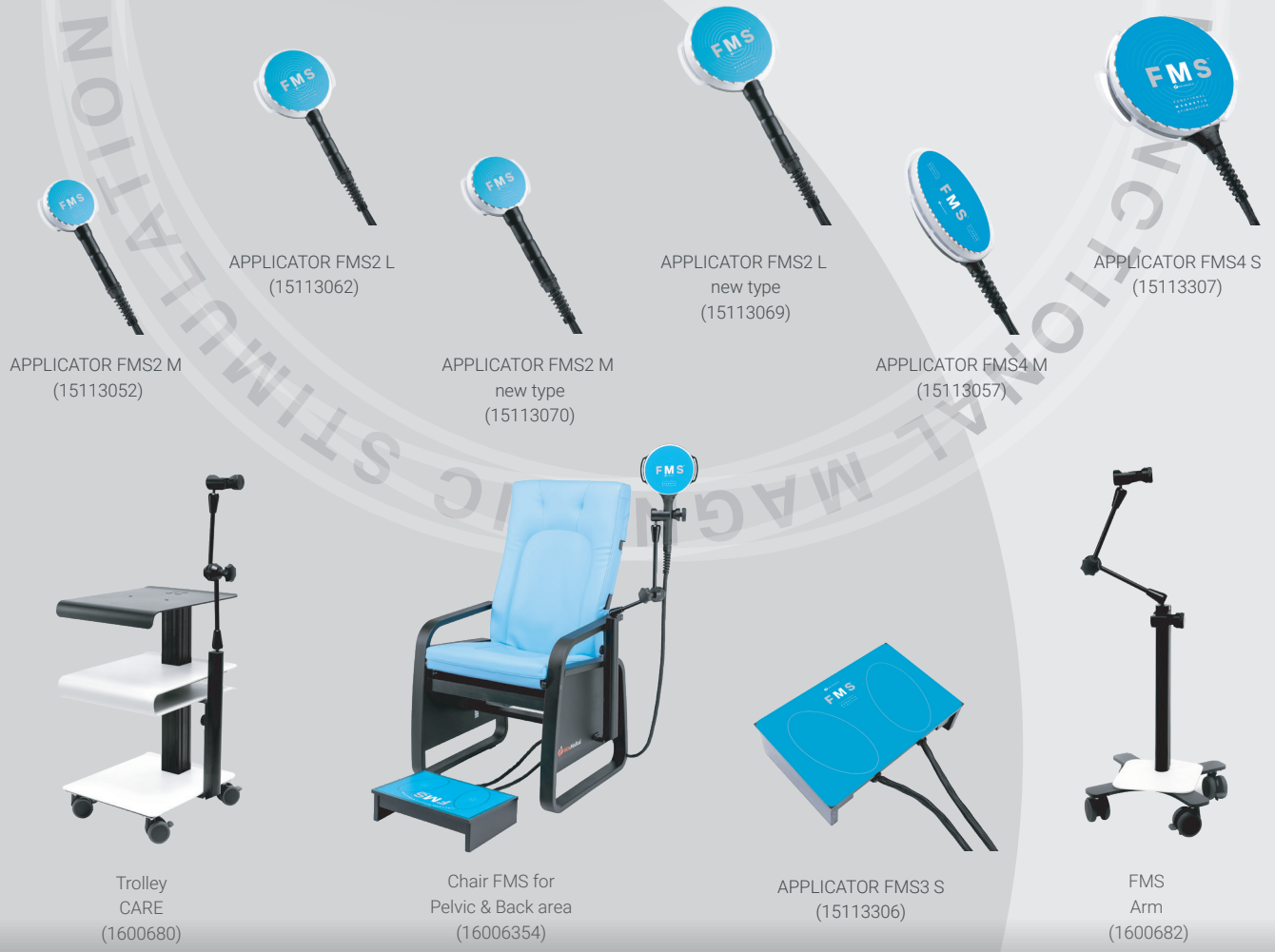


CE 2265

FMS Care
(MDD - 1800614)
(MDR - 2800614)

- 4 CHANNELS**
- SIMULTANEOUS TREATMENT**
- USER DEFINED AND CUSTOMIZED PROGRAMS**
- CONNECT DIFFERENT APPLICATORS AND FMS CHAIR**

Accessories



APPLICATOR FMS2 M
(15113052)

APPLICATOR FMS2 L
(15113062)

APPLICATOR FMS2 M
new type
(15113070)

APPLICATOR FMS2 L
new type
(15113069)

APPLICATOR FMS4 M
(15113057)

APPLICATOR FMS4 S
(15113307)

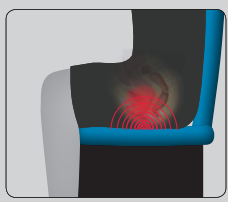
Trolley
CARE
(1600680)

Chair FMS for
Pelvic & Back area
(16006354)

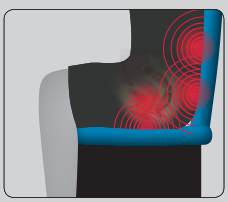
APPLICATOR FMS3 S
(15113306)

FMS
Arm
(1600682)

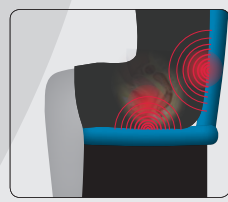
There are three different chair models that are used to treat lumbar area and pelvic floor area:



Chair FMS for Pelvic area (16006361)



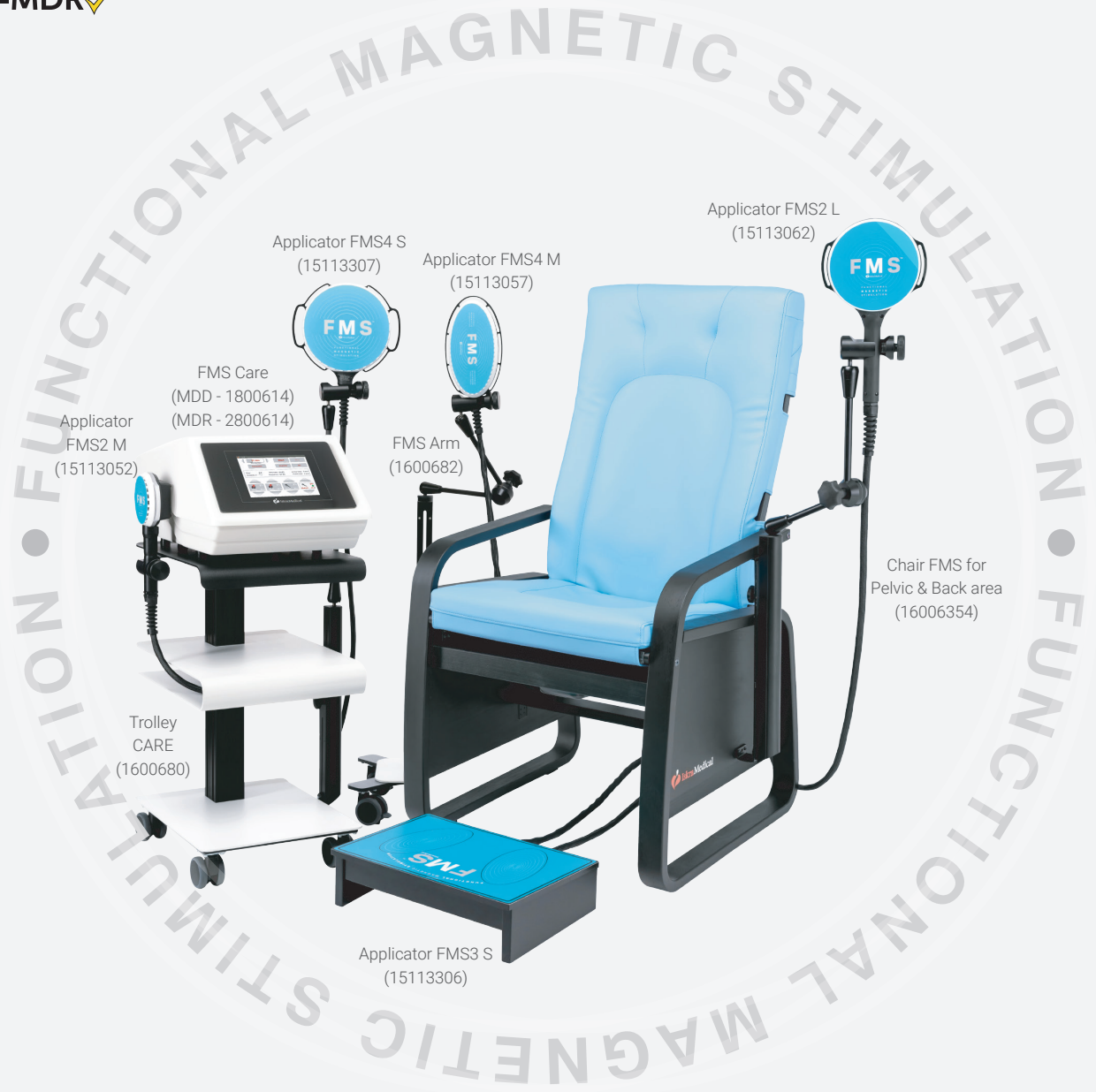
Chair FMS for Pelvic & 2x Back area (16006362)



Chair FMS for Pelvic & Back area (16006359)

CE 2265

EU-MDR



FMS Care™

FUNCTIONAL
MAGNETIC
STIMULATION

4 CHANNELS

SIMULTANEOUS TREATMENT

USER DEFINED AND CUSTOMIZED PROGRAMS

CONNECT DIFFERENT APPLICATORS AND FMS CHAIR

Advantages:

DEEP STIMULATION OF MUSCULAR STRUCTURES

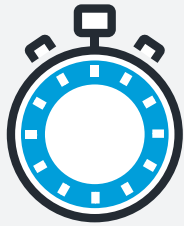
MORE EFFECTIVE THAN ELECTROSTIMULATION

PAINLESS AND NON-INVASIVE THERAPY

SUITABLE FOR PATIENTS WHERE ELECTROTHERAPY CANNOT BE USED

SKIN CONTACT IS NOT NECESSARY

POSSIBILITY OF HANDS-FREE APPLICATION



EFFECTIVE AND DURABLE

IMPROVEMENTS
AFTER A FEW
SESSIONS



SAFE AND PAINLESS

RESULTS ARE
SUPPORTED BY
SCIENTIFIC STUDIES



NON INVASIVE

EFFECTIVELY STIMULATES
MUSCLE TISSUE WITH OR
WITHOUT SKIN CONTACT

iskramedical-rehabilitation.com

DISTRIBUTOR: